

inspired estate agents

www.inspiredestateagents.com

tel 726599

Edessa

Perry's: T H6

TRP: tba

Parish: Peter Port

Price: £425,000



“Edessa” is a 2/3 bedroom detached house situated within a short stroll away from the Town centre and all it’s amenities.

The property is set back and offers a private front and rear garden with ample disc parking across the road, an ideal project to put your own personal taste and ideas to upgrade within. Ideal property for those of you moving up the property ladder.

Accommodation comprises:- Entrance Hall. Cloakroom. Kitchen. Living Room. Dining/Bedroom 3. Bathroom. 2 Bedrooms. Garden and nearby disc parking.

- 2/3 bedroom detached house
- Private front and rear garden
- Short stroll from Town centre
- Ideal family property
- Early viewing recommended



Entrance hallway



Kitchen

inspired estate agents





Upvc obscure half glazed door into:-

ENTRANCE HALL

Staircase up to first floor with under stairs cupboard. Carpet. Dimplex wall mounted radiator. Upvc half glazed door to garden. Doors to:-

CLOAKROOM

Small obscure glazed window to rear. WC. Carpet.

LIVING ROOM

Upvc glazed patio doors with side inset leads out to the rear garden. Wall mounted Dimplex radiator. Carpet. Feature tiled fireplace with mantle and hearth. TV point. Upvc side window. Door to:-

DINING/BEDROOM 3

Upvc bay window overlooking front garden and window to side. Wall mounted Dimplex radiator. Cupboard with shelving. Door to:-

KITCHEN

Upvc window with blinds to side. Radiator. There are floor and wall units insitu (would benefit from a total upgrade).

Back to Entrance Hall, staircase up to half landing with large Upvc window with blinds overlooking rear garden, stairs up to:-

LANDING

Carpet. Cupboard housing pressurised boiler with slatted shelving above. Doors off to:-

MASTER BEDROOM

Upvc windows to side and rear garden. Wall mounted Dimplex radiator. Carpet. Built-in wardrobe.



Dining room - bedroom 3



Master bedroom



BATHROOM

Upvc obscure glazed window to side. 2 piece suite comprising panel bath, pedestal hand basin with mirror fronted medicine cupboard and shaver/light point over. Wall mounted Dimplex radiator. (would benefit from total upgrade).

SEPARATE WC

Upvc obscure glazed window to side. WC.

BEDROOM 2

Upvc window with curtains overlooking front and side aspect. Carpet. Built-in wardrobe.

EXTERIOR FRONT

The property is approached over a flight of steps, pathway leads to the entrance door and beyond to the rear garden. The front garden is mainly laid to lawn bounded by mature hedging.

REAR

South facing garden benefits from the sun. Mainly laid to lawn. Patio area. Fruit trees. Storage sheds. Bounded by mature hedging giving a good degree of privacy.

Services:

Mains Electricity, water, drains, electric economy 12 heating

Included in the Sale:

All fitted floor coverings, curtains, blinds, light fittings, all fitted units and appliances as listed.



Bedroom 2



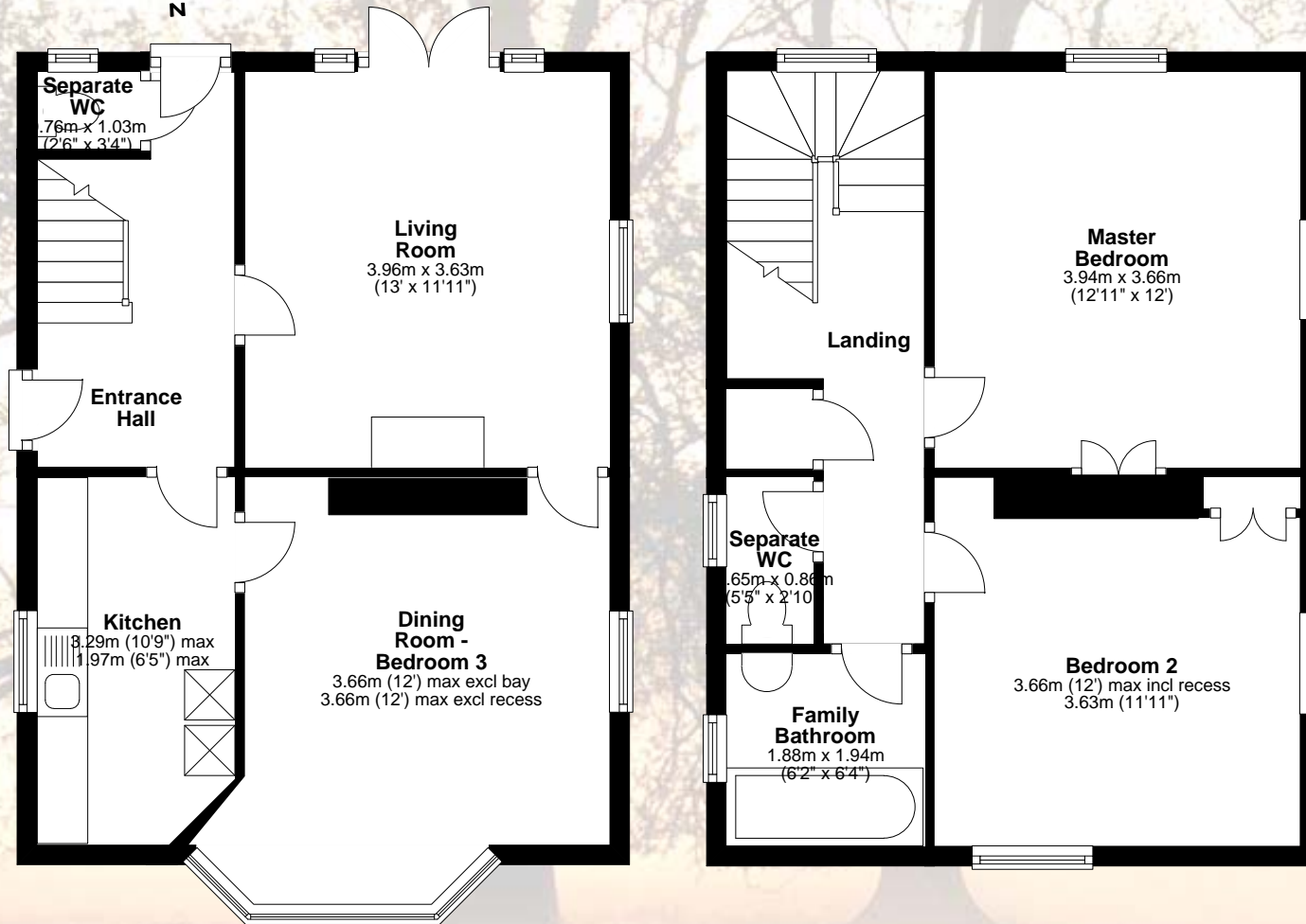
House rear





Ground Floor
Approx. 43.8 sq. metres (471.4 sq. feet)

First Floor
Approx. 42.0 sq. metres (451.7 sq. feet)



Viewing is strictly by appointment with Inspired Estate Agents Ltd.
This document has been created as a guide to the property's particulars. It is not part of any contract. Every effort has been taken to ensure the details included herein are correct but we cannot guarantee their accuracy.
Inspired Estate Agents, 27 Glatigny Esplanade, St Peter Port, Guernsey. GY1 1WR



www.collasday.com/property

At Collas Day we'll help you to get
into your perfect home.

solutions in property

BANKING / COMMERCIAL / DISPUTE RESOLUTION / FIDUCIARY / FUNDS / INTELLECTUAL PROPERTY / PRIVATE CLIENT / PROPERTY

T: +44 (0)1481 723191 **E:** askmore@collasday.com
PO Box 140, Manor Place, St Peter Port, Guernsey GY1 4EW

 **collas | day**